



Educational leadership – now I have the title what do I do next?

So now you are an educational leader what do you do? In this session we will explore how to best come to understand your role as an educational leader as well as identifying mechanisms to create amazing educational change and pedagogical outcomes.



Educational leadership is an often misunderstood role which is interpreted in many ways. This multiple interpretation isn't a bad thing; however, this raises more questions than answers for both educational leaders and non-educational leaders. It is widely understood that educational leaders are meant to create change in the pedagogical space. In this session we will explore how to best come to understand your role as an educational leader as well as identifying mechanisms to create amazing educational change and pedagogical outcomes.

When: Wednesday September 6th, 9.30am – 2.30pm

Where: Victorian Archive Centre, 99 Shiel St, North Melbourne. Free parking on site (enter via Macaulay Street).

Cost: \$175 Members \$250 Non Members

LINKS TO AUSTRALIAN PROFESSIONAL STANDARDS FOR TEACHERS

KNOWLEDGE
1.1, 2.1

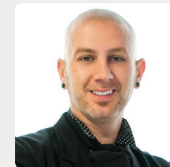
ENGAGEMENT
6.3, 7.4

LINKS TO NATIONAL QUALITY STANDARD

QA1 EDUCATIONAL PROGRAM AND PRACTICE

QA4 STAFFING ARRANGEMENTS

QA7 LEADERSHIP AND SERVICE MANAGEMENT



ABOUT THE PRESENTER

Anthony Semann is one of the Directors and founders at Semann & Slattery.

For the past 15 years he has worked as a researcher, consultant and manager with a range of government and private organisations across Australia and overseas. He is a sought after facilitator and has delivered over 100 opening addresses at conferences, 150 conference papers and 4,000 professional development programs. Anthony challenges organisations and people to reflect on how their approaches to communication, leadership, diversity, values, relationships and workplace culture affect their services, businesses and ultimately the community. Anthony is currently completing a PhD at Macquarie University exploring the nexus between leadership and courage.

Register on-line at www.elaa.org.au/pld or call (03) 9489 3500.

Prior registrations are essential. Please sign in 15 minutes prior to the commencement of a session.