



Being an ethical professional – embedding ethics in our everyday practice

Choosing to act ethically is a defining feature of being an Early Childhood Professional. From decisions to support children's rights and uphold their agency to deciding what to say or not say to a parent or colleague, ethics are part of everyday practice.



This session explores the delicate art of understanding what we have a right to do and what is right to do. It applies in equal measure to the relationships we pursue with children, families, our colleagues and importantly to the way we understand ourselves. As the dimensions of our practice change and the nature of community life become more complex the need for an ethical frame to inform and shape our professional decisions becomes even more critical. Understanding the place of ethics in our everyday work is a means of calibrating our thinking so we can better navigate the way forward. This will be an interactive session where educators will be encouraged to ask questions, share ideas and identify strategy for change.

When: Tuesday September 19th, 9.30am – 2.30pm

Where: Manningham City Council, 699 Doncaster Road, Doncaster. Free parking on site.

Cost: \$175 Members \$250 Non Members

Register on-line at www.elaa.org.au/pld or call (03) 9489 3500.

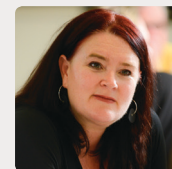
Prior registrations are essential. Please sign in 15 minutes prior to the commencement of a session.

LINKS TO AUSTRALIAN PROFESSIONAL STANDARDS FOR TEACHERS

ENGAGEMENT
6.2, 6.3, 7.1, 7.2

LINKS TO NATIONAL QUALITY STANDARD

- QA1** EDUCATIONAL PROGRAM AND PRACTICE
- QA2** CHILDREN'S HEALTH & SAFETY
- QA3** PHYSICAL ENVIRONMENT
- QA4** STAFFING ARRANGEMENTS
- QA5** RELATIONSHIPS WITH CHILDREN
- QA6** COLLABORATIVE PARTNERSHIPS WITH FAMILIES AND COMMUNITIES
- QA7** LEADERSHIP AND SERVICE MANAGEMENT



ABOUT THE PRESENTER

A dynamic speaker skilled at engaging professionals, Catharine Hydon

is currently an independent consultant guiding professionals in professional dialogue and reflective conversations. Beginning as a kindergarten teacher, Catharine has managed a range of services for children and their families. Her qualifications include a Masters in Early Childhood Education, specialising in early childhood practice, policy and governance, the delivery of integrated services and the exploration of innovative programs for vulnerable children and their families. Formerly a Director on the National Board of Early Childhood Australia (ECA), Catharine is currently Co-chair of the Reconciliation Advisory group for ECA and President of the ECA Victorian Branch.