



Developing relationships as the foundation of the curriculum in infant/toddler learning environments

Professor Frank Oberklaid spoke at the 2006 NED Early Years Conference and stated that “Of all the factors that operate in a young child’s environment, the single most important determinant is the quality of the child’s relationships with parents and caregivers – it is the relationship that the young child has with their caregiver(s) that literally sculpts the brain and determines the development of circuits.”



Secure, positive attachment and meaningful relationships with very young children and their families are the foundation of positive education and care environments for young children. With this in mind, this session will explore attachment theory, how relationships between teachers and educators and very young children can be fostered and how the learning environment can hinder or support the development of relationships with babies and toddlers.

When: Thursday March 16th, 9.30am – 2.30pm

Where: Darebin North East Community Hub, 35 Copernicus Crescent, Bundoora.
Free parking on site.

Cost: \$175 Members \$250 Non Members

LINKS TO AUSTRALIAN PROFESSIONAL STANDARDS FOR TEACHERS

KNOWLEDGE
1.2, 1.5

PRACTICE
3.5, 4.1

ENGAGEMENT
6.4

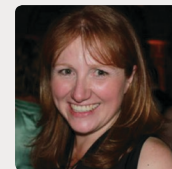
LINKS TO NATIONAL QUALITY STANDARD

QA1 EDUCATIONAL PROGRAM AND PRACTICE

QA3 PHYSICAL ENVIRONMENT

QA5 RELATIONSHIPS WITH CHILDREN

QA6 COLLABORATIVE PARTNERSHIPS WITH FAMILIES AND COMMUNITIES



ABOUT THE PRESENTER

Karen Glancy is an early childhood trainer, consultant and mentor. Karen has extensive

experience working in all early childhood settings and co-owns a gardening and landscaping business. Karen’s qualifications include a Bachelor of Early Childhood Studies and a Horticulture Certificate. She has a particular interest in the development of engaging learning environments using natural and recycled materials, sustainable living, education for the environment, gardening with children and outdoor learning environments.

Register on-line at www.elaa.org.au/pld or call (03) 9489 3500.

Prior registrations are essential. Please sign in 15 minutes prior to the commencement of a session.