



The Strength of the Community Not for Profit Early Education Sector

March 2021



EARLY
LEARNING
ASSOCIATION
AUSTRALIA



Community Early Learning Australia

Community Early Learning Australia (CELA) was founded over 40 years ago, our philosophy is that all children deserve quality affordable early education and care and that this underpins Australia's future. We represent over 1500 early education and care services employing 21,000 plus educators. Our national influence is extended through publications and social media which have a circulation of 52,000 per week and our learning and development program which trains over 7000 educators per year in quality practice and governance.

More information about CELA can be found at www.cela.org.au



Early Learning Association Australia

Early Learning Association Australia (ELAA) is a peak body which works in partnership with early learning providers and parents to deliver our vision of excellence in learning for every child. Our diverse membership base of over 625 service providers managing services at over 1,300 locations includes early years management organisations, independent kindergartens, local governments, long day care services, government and independent schools and out of school hours care programs.

More information about ELAA can be found at www.elaa.org.au



Community Child Care Association

Community Child Care Association (CCC) has been the voice of community owned and managed education and care services across Victoria for 50 years. Our 600+ service members rely on us for free professional advice and support, and to keep them up to date with industry standards, best practices and the implementation of government policy. CCC is here to help services transform their vision into practice and we offer membership, quality training and consultancy services.

More information about CCC can be found at www.cccinc.org.au

1. About the system

- Breadth
- Enrolments
- Vulnerability

2. Community sector strengths

- Quality
- Investment in staffing



1. ABOUT THE SYSTEM

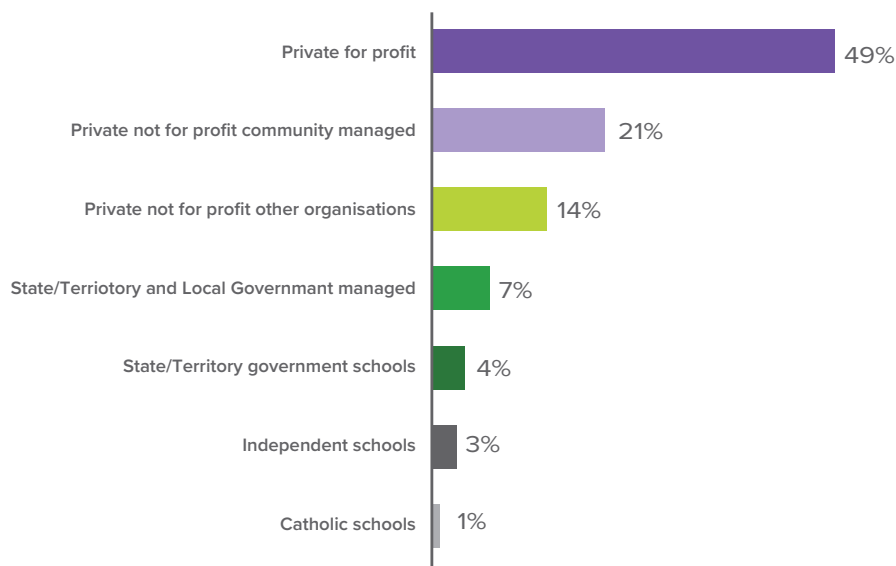


Australia's ECEC system

- Federal and State funding responsibilities
- National curriculum – Early Years Learning Framework
- National Quality Framework
- Diverse delivery models including:
 - Kindergarten/Preschool – usually 15 hours per week to 4 year olds, most are small stand alone centres
 - Long Day Care – can incorporate preschool program, at least 8 hours a day care, range of services sizes and models from stand alone to large providers
 - Family Day Care – individual educators in their own home, small group size
- Out of School Hours Care / Holiday Care – school aged children
- Not for profit and private service delivery

The early childhood education and care sector

Proportion of services by provider management type



ACECQA Q4 2020 Snapshot

Number and proportion of services by provider management type

Provider management type	Number of services	Proportion of services
Private for profit	8,000	49%
Private not for profit community managed	3,402	21%
Private not for profit other organisations	2,236	14%
State/Territory and Local Government managed	1,210	7%
State/Territory government schools	699	4%
Independent schools	495	3%
Catholic schools	200	1%
Not stated/Other	15	0%
Total	16,257	100%

Whilst there has been a shift to private provision, the community sector remains large.

ACECQA Q4 2020 Snapshot

Breadth

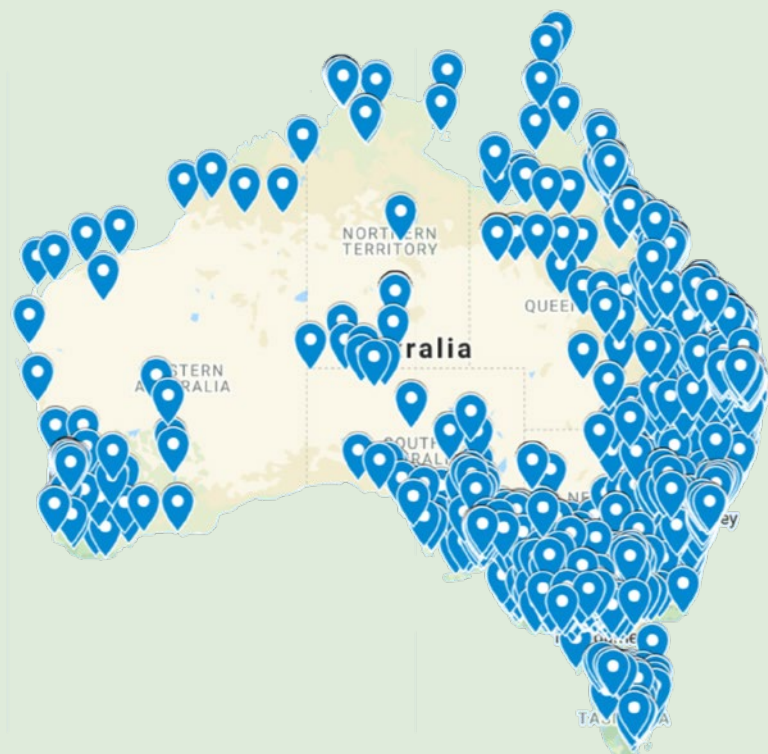
Breadth of community based service provision

Type of service	Number of services
TOTAL	5,000+
Preschool/Kinder	2,700 +
Long Day Care	1,700+
Out of School Hours Care	950+
Family Day Care	200

We provide a range of services to meet community needs – from mobile preschools to out of school hours care and everything in between.

ACECQA Q4 2020 Snapshot

Geography of community based services



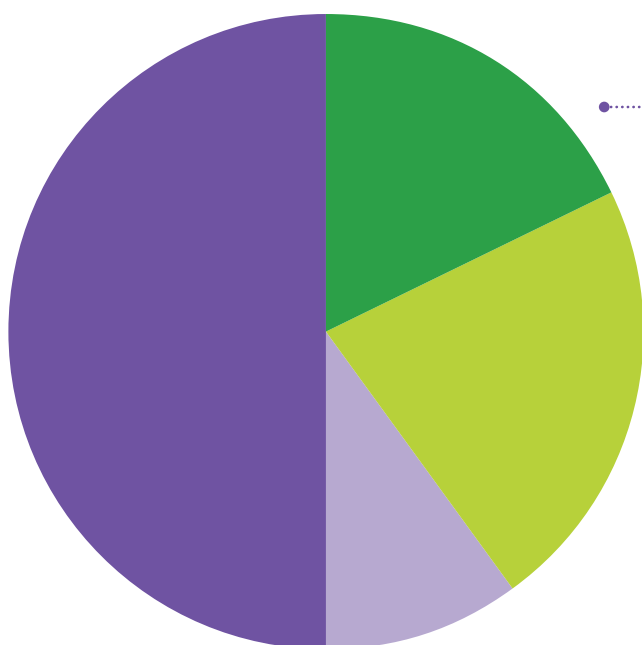
Our services are located in communities across Australia, including in regional and remote areas.

Enrolments



Year before school preschool enrolments

% by enrolments



Over 40% year before school early childhood education is delivered by the community based sector.

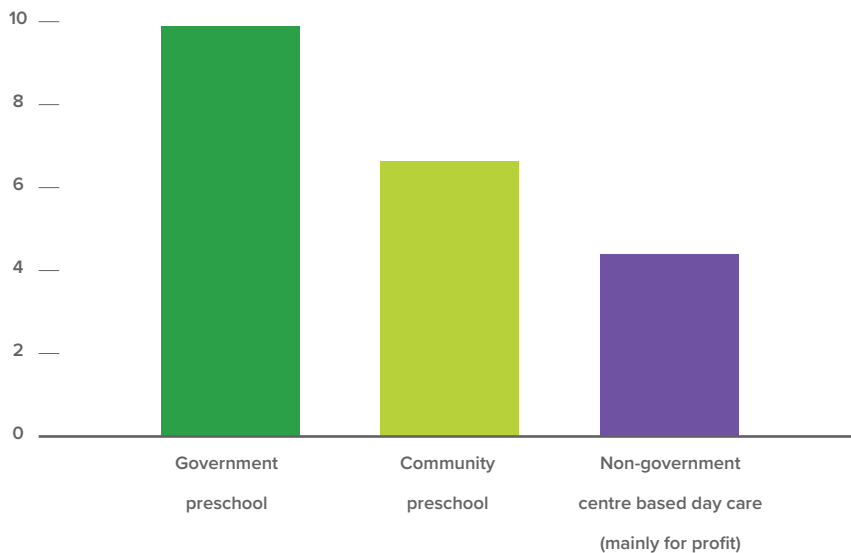
- Government preschool
- Community preschool
- Other – schools, private preschool, government long day care
- Non-government centre based day care (mainly for profit)

Preschool in Australia Microdata

Vulnerability

% Aboriginal or Torres Strait Islander Children by sector

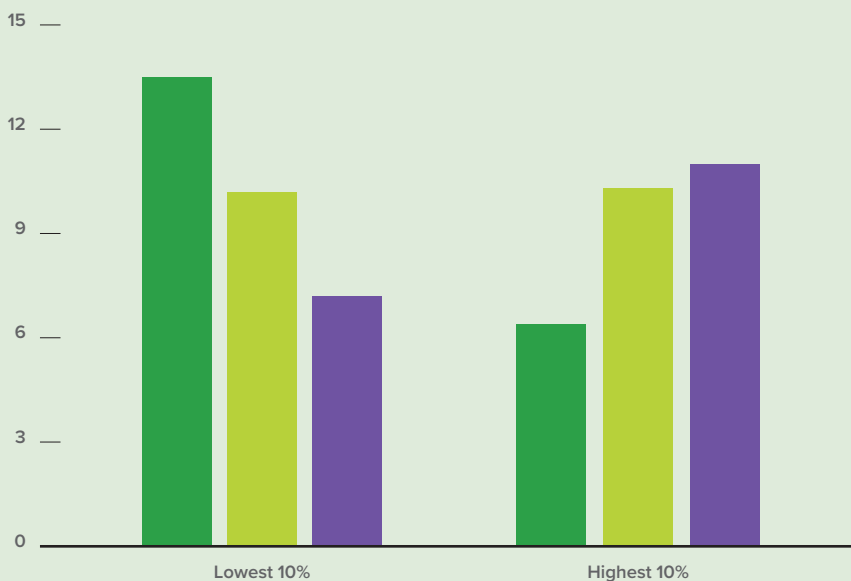
Proportion of Aboriginal and Torres Strait Islander enrolments in year before school early childhood education as a % of total enrolments



Our services are committed to equity. Aboriginal and Torres Strait Islander children make up a larger proportion of community preschool enrolments than they do in non-government centre based daycare. Around 60% of Aboriginal and Torres Strait Islander preschool enrolments are in our sector.

Preschool in Australia Microdata

Preschool enrolment by socio-economic status (SEIFA)



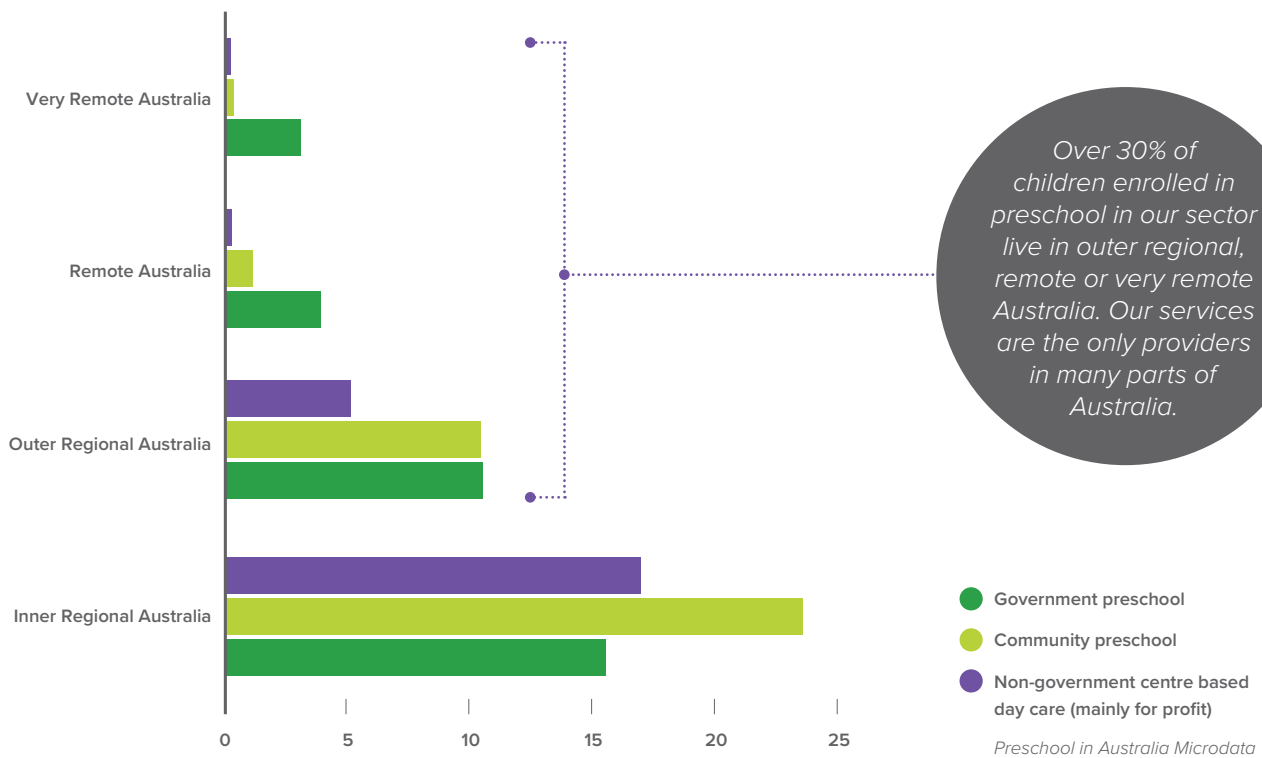
Government and community preschools are more likely to reach most disadvantaged children. One in seven enrolments in a government preschool are from the most disadvantaged areas.

- Government preschool
- Community preschool
- Non-government centre based day care (mainly for profit)

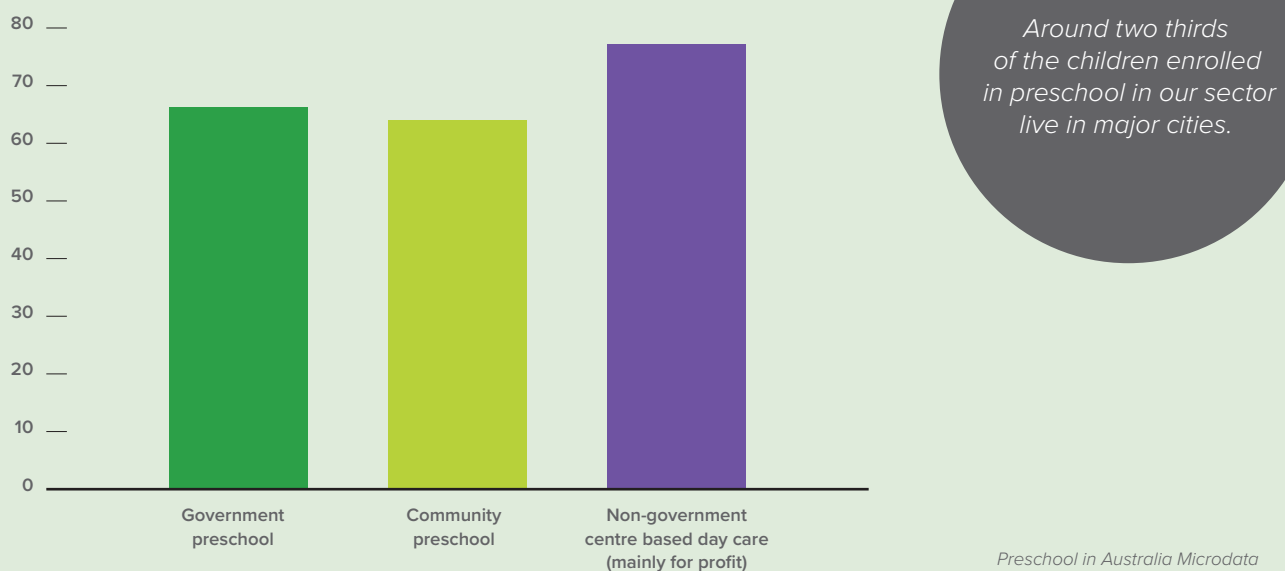
Preschool in Australia Microdata

Vulnerability

Preschool enrolment by remoteness



Preschool enrolment in major cities of Australia





2.

COMMUNITY SECTOR STRENGTHS

Quality



Breadth of community based service provision

Management type	% Exceeding national quality standards
Private for profit	18%
Not for profit community managed	42%
Not for profit other	31%
State, Territory, local Government managed	55%

More of our services provide the highest levels of quality, ensuring children and families get the benefits of early childhood education.

ACECQA Q4 2020 Snapshot



Investment in staffing driving quality

- Around 80% expenditure committed to staffing, compared to 50-55% in large for profit centres
- Despite COVID, our services retained long serving staff – our workforce has more than 6 years experience, up to a quarter have 10 years experience
- Over half of staff in community based services have Bachelor degrees or diplomas
- All money is reinvested to improve services