



Best Start Best Life Reform

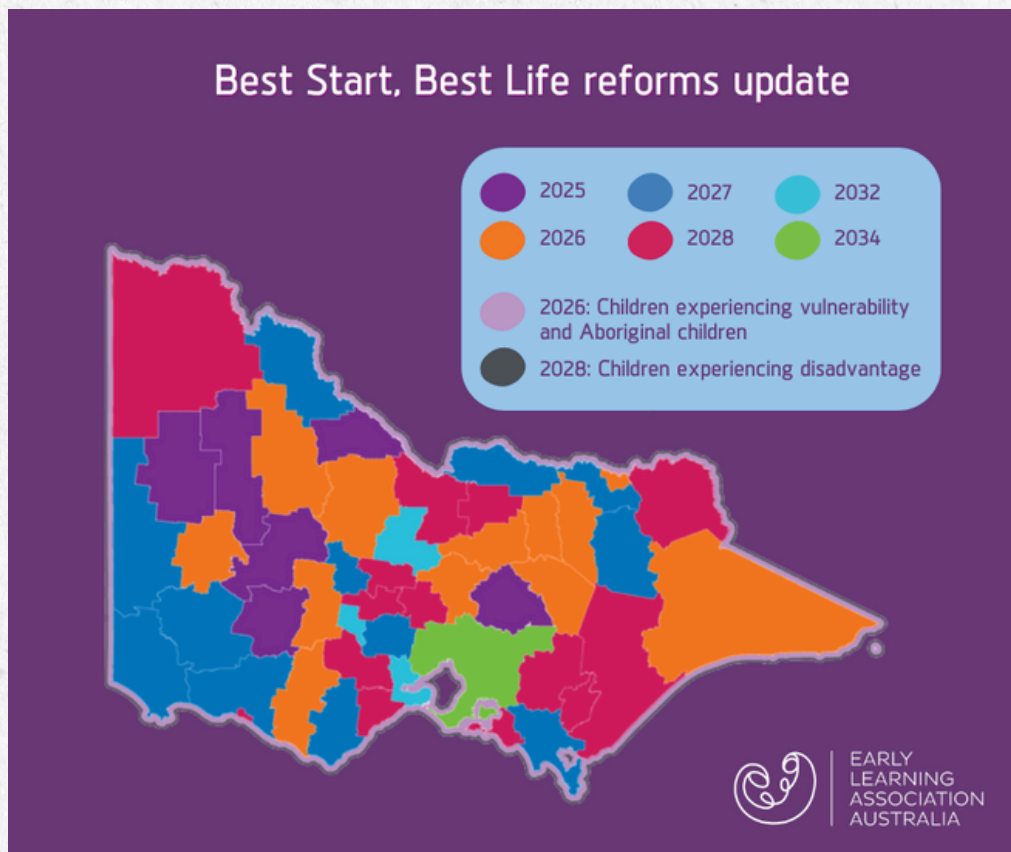
The Victorian Government's Best Start, Best Life reforms represent the most substantial transformation in Victoria's early childhood sector in a generation.

As part of these reforms:

The Three-Year-Old Kindergarten program will expand, reaching 15 hours per week across the state by 2029.

The Four-Year-Old Kindergarten program will evolve into Pre-Prep, with weekly hours increasing from 15 to 30 by 2036 throughout Victoria.

Extending the hours of teacher-led, play-based learning through Pre-Prep in the year before school provides children with enhanced access to the numerous benefits of early childhood education. Pre-Prep will launch in 2025, starting with children in six regional Victorian local government areas, and will gradually expand across the state.

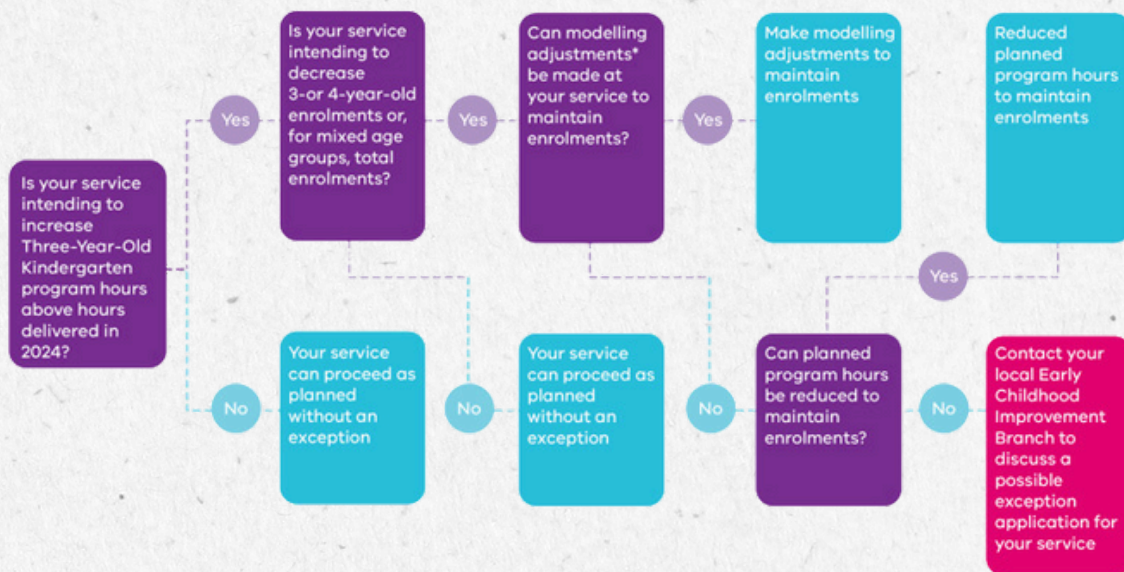


3 year old Kindergarten

Starting in 2025, service providers will have the flexibility to decide the number of hours of funded Three-Year-Old Kindergarten they offer each week, ranging from a minimum of 5 hours to a maximum of 15 hours, within established guidelines.



Three-Year-Old Kindergarten program hours: 5 to 15 hours per week



* Your local Early Childhood Improvement Branch can provide advice on possible modelling adjustments, for example, operating additional days, changing group sizes, delivering longer sessions, adopting a rotational model.

Reference: Image from Department of Education [Operational policies supporting the Best Start, Best Life reforms](https://www.vic.gov.au) | [vic.gov.au](https://www.vic.gov.au) (www.vic.gov.au).

Priority Group

From 2026, all children across the state identifying as Aboriginal or Torres Strait Islander, children from a refugee or asylum seeker background, and children who have had contact with Child Protection services, can access between 16 and 25 hours of Pre-Prep, and up to 30 hours from 2028.

ELAA support

For any support with change management or further information contact the Best Start Best Life Reform and Engagement Advisor membersolutions@elaa.org.au

Useful Links

Operational Policy Settings: [Operational policies supporting the Best Start, Best Life reforms](https://www.vic.gov.au) | [vic.gov.au](https://www.vic.gov.au) (www.vic.gov.au).

Best Start Best Life Reform: [The Best Start, Best Life reforms](https://www.vic.gov.au) | [vic.gov.au](https://www.vic.gov.au) (www.vic.gov.au).

Workforce Strategy: [Best Start, Best Life Workforce Strategy](https://www.vic.gov.au) | [vic.gov.au](https://www.vic.gov.au) (www.vic.gov.au).

Infrastructure: [Building Blocks: Best Start, Best Life Kindergarten Infrastructure Strategy](https://www.vic.gov.au) | [vic.gov.au](https://www.vic.gov.au) (www.vic.gov.au).

Communication Pack: [Communicating about kindergarten to your community](https://www.vic.gov.au) | [vic.gov.au](https://www.vic.gov.au) (www.vic.gov.au).